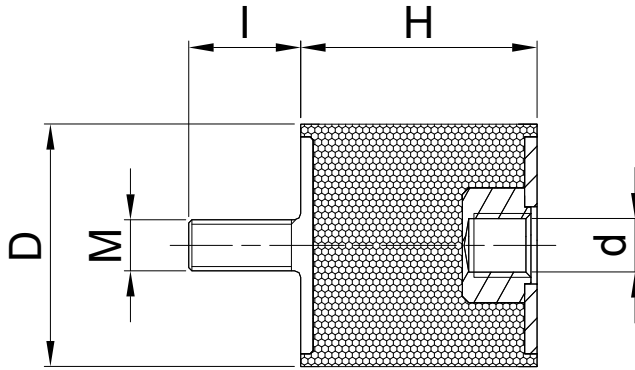


TYPE VD



Item 型号	D	H	d	M x I	橡胶硬度 45 IRHD (daN/mm)	橡胶硬度 60 IRHD (daN/mm)	橡胶硬度 70 IRHD (daN/mm)	Maximale statische Einfederung 适当压缩量(mm)
1008VD10	10	8	M4	M4X10	4.0	7.3	10.3	1.6
1010VD10	10	10	M4	M4X10				
1508VD10	15	8		M4X10				
1610VD10	16	10	M4	M4X12				
1610VD12	16	10	M5	M5X12				
1615VD10	16	15	M4	M4X10	4.6	8.5	11.8	3.0
2008VD18	20	8		M6X18				
2015VD18	20	15		M6X18	7.8	7.8	7.8	3.0
2020VD18	20	20		M6X18	4.5	8.4	11.6	4.0
2025VD18	20	25		M6X18	3.1	5.6	8.0	5.0
2030VD18	20	30		M6X18	2.1	3.8	5.3	6.0
2508VD18	25	8		M6X18				
2508VD20	25	8		M8X20				
2510VD20	25	10		M8X20				
2515VD18	25	15		M6X18	15.4	29.2	40.8	3.0
2520VD18	25	20	M6	M6X18	10.3	18.8	25.0	4.0
2520VD20	25	20	M8	M8X20	10.3	18.8	25.0	4.0
2522VD20	25	22	M8	M8X20	8.2	15.6	20.6	4.4
2525VD18	25	25	M6	M6X18	6.1	11.4	15.7	5.0
2525VD20	25	25	M8	M8X20	6.1	11.4	15.7	5.0



2530VD18	25	30	M6	M6X18	4.4	8.5	11.1	6.0
2530VD20	25	30	M8	M8X20	4.4	8.5	11.1	6.0
3015VD20	30	15	M8	M8X20	20.9	30.3	53.6	3.0
3020VD20	30	20	M8	M8X20	13.1	22.4	33.1	4.0
3025VD20	30	25	M8	M8X20	8.3	14.3	19.5	5.0
3030VD20	30	30	M8	M8X20	6.0	11.2	15.0	6.0
3040VD20	30	40	M8	M8X20	4.0	7.8	10.3	8.0
4020VD23	40	20	M8	M8X23	26.3	49.4	68.1	4.0
4020VD25	40	20	M10	M10X25	26.3	49.4	68.1	4.0
4025VD25	40	25	M10	M10X25	18.6	34.8	47.6	5.0
4028VD25	40	28	M10	M10X25	15.0	27.9	38.3	5.6
4030VD23	40	30	M8	M8X23	13.1	24.6	34.2	6.0
4030VD25	40	30	M10	M10X25	13.1	24.6	34.2	6.0
4035VD23	40	35	M8	M8X23	10.0	18.4	25.8	7.0
4035VD25	40	35	M10	M10X25	10.0	18.4	25.8	7.0
4040VD23	40	40	M8	M8X23	8.3	15.3	21.1	8.0
4040VD25	40	40	M10	M10X25	8.3	15.3	21.1	8.0
4045VD25	40	45	M10	M10X25	8.3	15.3	21.1	9.0
5020VD25	50	20	M10	M10X25	58.0	109.3	150.7	4.0
5025VD25	50	25	M10	M10X25	40.5	75.5	104.5	5.0
5030VD25	50	30	M10	M10X25	28.0	51.6	71.2	6.0
5040VD25	50	40	M10	M10X25	14.3	26.9	37.1	8.0
5045VD25	50	45	M10	M10X25	11.3	21.0	29.3	9.0
5050VD25	50	50	M10	M10X25	9.1	17.3	23.8	10.0
6036VD25	60	36	M10	M10X25	35.2	65.5	90.3	7.2
6036VD37	60	36	M12	M12X37	35.2	65.5	90.3	7.2
6040VD25	60	40	M10	M10X25	28.9	53.7	73.1	8.0
6040VD37	60	40	M12	M12X37	28.9	53.7	73.1	8.0
6045VD25	60	45	M10	M10X25	23.0	42.8	59.3	9.0
6045VD37	60	45	M12	M12X37	23.0	42.8	59.3	9.0
6050VD37	60	50	M12	M12X37	18.2	34.0	46.9	10.0
6535VD25	65	35	M10	M10X25	44.3	82.3	114.0	7.0
6545VD37	65	45	M12	M12X37	25.8	47.5	66.0	9.0



6550VD37	65	50	M12	M12X37	19.6	36.2	50.2	10.0
7030VD25	70	30	M10	M10X25	72.9	135.8	185.4	6.0
7035VD25	70	35	M10	M10X25	53.1	105.9	145.9	7.0
7035VD37	70	35	M12	M12X37	53.1	105.9	145.9	7.0
7040VD25	70	40	M10	M10X25	42.1	78.2	107.9	8.0
7040VD37	70	40	M12	M12X37	42.1	78.2	107.9	8.0
7045VD25	70	45	M10	M10X25	33.1	61.3	82.3	9.0
7050VD25	70	50	M10	M10X25	26.6	49.3	68.2	10.0
7050VD37	70	50	M12	M12X37	26.6	49.3	68.2	10.0
7070VD25	70	70	M10	M10X25	17.3	32.2	44.7	14.0
7525VD37	75	25	M12	M12X37				
7540VD37	75	40	M12	M12X37	45.3	84.7	116.8	8.0
7550VD37	75	50	M12	M12X37	33.4	62.7	86.6	10.0
7555VD37	75	55	M12	M12X37	26.1	49.4	68.0	11.0
8030VD35	80	30	M14	M14X35	115.8	219.6	302.1	6.0
8040VD35	80	40	M14	M14X35	61.8	115.3	159.7	8.0
8050VD35	80	50	M14	M14X35	40.9	77.3	106.1	10.0
8050VD37	80	50	M12	M12X37	40.9	77.3	106.1	10.0
8060VD35	80	60	M14	M14X35	27.4	51.5	70.6	12.0
10040VD44	100	40	M16	M16X44	118.8	215.6	296.9	8.0
10050VD44	100	50	M16	M16X44	71.4	128.6	178.6	10.0
10055VD44	100	55	M16	M16X44	58.5	109.6	151.1	11.0
10060VD44	100	60	M16	M16X44	51.0	92.3	128.8	12.0
10075VD44	100	75	M16	M16X44	32.8	58.2	80.6	15.0