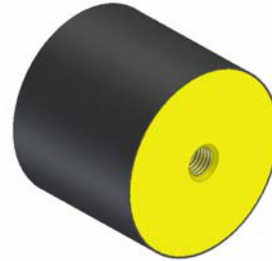
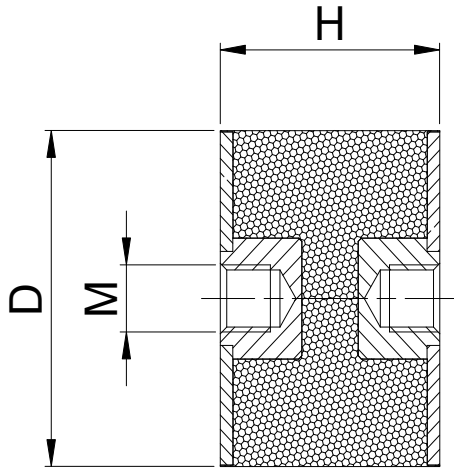


TYPE DD



Item 型号	D	H	M x l	橡胶硬度 45 IRHD (daN/mm)	橡胶硬度 60 IRHD (daN/mm)	橡胶硬度 70 IRHD (daN/mm)	Maximale statische Einfederung 适当压缩量(mm)
2015DD06	20	15	M6	7.9	14.8	20.5	3.0
2020DD06	20	20	M6	4.6	8.6	11.8	4.0
2025DD06	20	25	M6	3.2	3.2	3.2	5.0
2030DD06	20	30	M6	2.2	3.8	5.4	6.0
2515DD06	25	15	M6	15.7	30.0	42.0	3.0
2520DD06	25	20	M6	10.5	19.4	25.6	4.0
2525DD06	25	25	M8	6.2	11.9	16.2	5.0
2530DD08	25	30	M8	4.8	8.9	11.5	6.0
3020DD08	30	20	M8	12.6	24.0	32.0	4.0
3030DD08	30	30	M8	6.1	11.5	15.4	6.0
3040DD08	30	40	M8	4.1	8.1	10.6	8.0
4020DD08	40	20	M8	26.7	50.8	73.3	4.0
4028DD08	40	28	M8	15.4	28.3	38.8	5.6
4028DD10	40	28	M10	15.4	28.3	38.8	5.6
4030DD08	40	30	M8	13.5	25.0	35.0	6.0
4030DD10	40	30	M10	13.5	25.0	35.0	6.0
4040DD08	40	40	M8	8.6	15.8	21.7	8.0
4040DD10	40	40	M10	8.6	15.8	21.7	8.0
4045DD10	40	45	M10	7.3	13.7	18.8	9.0
5025DD10	50	25	M10	36.2	66.7	91.9	5.0



5030DD10	50	30	M10	28.4	52.4	72.0	5.0
5040DD10	50	40	M10	14.6	27.1	37.7	8.0
5045DD10	50	45	M10	11.5	21.5	30.0	9.0
5050DD10	50	50	M10	9.3	17.8	24.2	10.0
6036DD10	60	36	M10	35.8	66.5	91.9	7.2
6036DD12	60	36	M12	32.6	60.6	83.8	7.2
6040DD10	60	40	M10	29.4	54.9	74.6	8.0
6040DD12	60	40	M12	29.4	54.9	74.6	8.0
6045DD10	60	45	M10	23.3	43.5	60.3	9.0
6045DD12	60	45	M12	23.3	43.5	60.3	9.0
6050DD12	60	50	M12	18.7	34.7	47.8	10.0
6545DD10	65	45	M10	26.3	48.5	67.0	9.0
6545DD12	65	45	M12	26.3	48.5	67.0	9.0
6550DD12	65	50	M12	20.0	36.7	51.1	10.0
7030DD10	70	30	M10	74.2	137.5	187.5	6.0
7030DD12	70	30	M12	74.2	137.5	187.5	6.0
7040DD10	70	40	M10	42.6	79.4	110.3	8.0
7040DD12	70	40	M12	42.6	79.4	110.3	8.0
7045DD10	70	45	M10	33.3	61.5	83.8	9.0
7045DD12	70	45	M12	33.3	61.5	83.8	9.0
7050DD10	70	50	M10	27.3	50.0	69.3	10.0
7050DD12	70	50	M12	27.3	50.0	69.3	10.0
7070DD10	70	70	M10	17.7	32.8	45.3	14.0
7070DD12	70	70	M12	17.7	32.8	45.3	14.0
7540DD12	75	40	M12	46.2	85.3	117.6	8.0
7550DD12	75	50	M12	34.1	63.6	88.6	10.0
7555DD12	75	55	M12	26.5	50.0	69.4	11.0
8040DD14	80	40	M14	62.9	117.6	161.8	8.0
8050DD12	80	50	M12	42.0	78.4	108.0	10.0
8050DD14	80	50	M14	42.0	78.4	108.0	10.0
8060DD14	80	60	M14	27.8	51.9	71.3	12.0
10040DD16	100	40	M16	121.9	218.8	303.1	8.0
10050DD16	100	50	M16	72.6	131.0	181.0	10.0



10055DD16	100	55	M16	59.6	110.6	153.2	11.0
10060DD16	100	60	M16	51.9	94.2	130.8	12.0
15075DD16	150	75	M16	60.4	108.2	150.7	15.0
15075DD20	150	75	M20	60.4	108.2	150.7	15.0