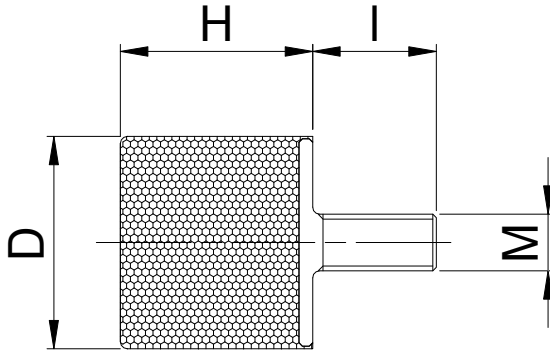


TYPE VE



Item 型号	D	H	M x I	橡胶硬度 45 IRHD (daN/mm)	橡胶硬度 60 IRHD (daN/mm)	橡胶硬度 70 IRHD (daN/mm)	Maximale statische Einfederung 适当压缩量(mm)
1413VE10	14	13	M4X10	4.5	6.9	9.5	2.6
1508VE10	15	8	M4X10	15.5	22.8	31.5	1.6
1610VE10	16	10	M4X12	10.8	16.2	22.4	2.0
1610VE12	16	10	M5X12	10.8	16.2	22.4	2.0
1615VE10	16	15	M4X10	5.5	8.0	11.2	3.0
2008VE18	20	8	M6X18	23.3	34.0	47.0	1.6
2012VE18	20	12	M6X18	13.3	19.8	27.3	2.4
2015VE18	20	15	M6X18	9.1	13.7	18.9	3.0
2020VE18	20	20	M6X18	5.2	7.8	10.7	4.0
2025VE18	20	25	M6X18	4.3	6.6	9.0	5.0
2030VE18	20	30	M6X18	2.9	4.1	5.8	6.0
2508VE18	25	8	M6X18	57.0	95.0	115.5	1.6
2508VE20	25	8	M8X20	57.0	95.0	115.5	1.6
2515VE18	25	15	M6X18	18.1	27.7	38.8	3.0
2517VE18	25	17	M6X18	16.4	24.0	33.2	3.4
2520VE18	25	20	M6X18	12.6	18.6	25.2	4.0
2520VE20	25	20	M8X20	12.6	18.6	25.2	4.0
2522VE20	25	22	M8X20	9.7	14.5	19.4	4.4



2525VE18	25	25	M6X18	7.1	10.6	14.7	5.0
2530VE20	25	30	M8X20	5.2	7.7	10.3	6.0
2540VE20	25	40	M8X20				
3010VE20	30	10	M8X20				
3015VE20	30	15	M8X20	23.5	35.2	49.2	3.0
3017VE20	30	17	M8X20	19.3	28.5	39.3	3.4
3020VE20	30	20	M8X20	15.1	22.7	31.0	4.0
3025VE20	30	25	M8X20	10.1	15.5	21.0	5.0
3030VE20	30	30	M8X20	7.0	10.3	14.2	6.0
3040VE20	40	40	M8X20	5.4	7.9	10.9	8.0
4020VE23	40	20	M8X23	31.0	46.6	66.7	4.0
4020VE25	40	20	M10X25	31.0	46.6	66.7	4.0
4025VE25	40	25	M10X25	21.8	32.6	45.0	5.0
4027VE23	40	27	M8X23	18.4	27.3	37.3	5.4
4028VE25	40	28	M10X25	18.4	27.3	37.3	5.6
4030VE23	40	30	M8X23	15.5	23.3	32.3	6.0
4030VE25	40	30	M10X25	15.5	23.3	32.3	6.0
4035VE23	40	35	M8X23	11.8	17.5	24.4	7.0
4035VE25	40	35	M10X25	11.8	17.5	24.4	7.0
4040VE23	40	40	M8X23	9.7	14.6	19.9	8.0
4040VE25	40	40	M10X25	9.7	14.6	19.9	8.0
4045VE25	40	45	M10X25	8.3	12.5	17.2	9.0
5015VE25	50	15	M10X25	75.5	112.5	154.9	3.0
5020VE28	50	20	M10X28	68.6	102.2	141.0	4.0
5021VE25	50	21	M10X25	65.6	97.9	134.9	4.2
5025VE25	50	25	M10X25	48.1	71.4	98.6	5.0
5030VE25	50	30	M10X25	32.9	48.5	67.3	6.0
5040VE25	50	40	M10X25	17.0	25.2	34.9	8.0
5045VE25	50	45	M10X25	13.4	19.8	27.6	9.0
5050VE25	58	50	M10X25	10.9	16.3	22.5	10.0
6025VE25	60	25	M10X25	82.2	107.1	169.1	5.0
6030VE37	60	30	M12X37	58.1	85.3	117.7	6.0
6036VE25	60	36	M10X25	46.3	69.0	94.8	7.2



6036VE37	60	36	M12X37	46.3	69.0	94.8	7.2
6040VE25	60	40	M10X25	37.8	56.3	76.6	8.0
6040VE37	60	40	M12X37	37.8	56.3	76.6	8.0
6045VE25	60	45	M10X25	30.2	44.8	62.0	9.0
6045VE37	60	45	M12X37	30.2	44.8	62.0	9.0
6050VE35	60	50	M10X35				
6050VE37	60	50	M12X37	24.0	35.7	49.3	10.0
6055VE37	60	55	M12X37	19.7	29.3	40.2	11.0
6060VE37	60	60	M12X37				
6535VE25	65	35	M10X25	52.1	77.6	107.5	7.0
6550VE37	65	50	M12X37	23.3	34.2	47.3	10.0
7030VE25	70	30	M10X25	86.0	128.1	176.0	6.0
7030VE37	70	30	M12X37	86.0	128.1	176.0	6.0
7035VE25	70	35	M10X25	62.6	99.8	137.5	7.0
7035VE37	70	35	M12X37	62.6	99.8	137.5	7.0
7040VE25	70	40	M10X25	49.5	73.7	101.9	8.0
7040VE37	70	40	M12X37	49.5	73.7	101.9	8.0
7045VE25	70	45	M10X25	38.8	57.8	77.6	9.0
7045VE37	70	45	M12X37	38.8	57.8	77.6	9.0
7050VE25	70	50	M10X25	31.0	46.6	64.4	10.0
7050VE37	70	50	M12X37	31.0	46.6	64.4	10
7070VE25	70	70	M10X25	29.1	42.6	59.0	14
7070VE37	70	70	M12X37	29.1	42.6	59.0	14
7525VE37	75	25	M12X37	70.6	107.1	147.4	5
7540VE37	75	40	M12X37	42.6	76.8	104.8	8
7550VE37	75	50	M12X37	39.6	59.0	81.5	10
8030VE35	80	30	M14X35	82.2	124.2	170.7	6
8040VE35	80	40	M14X35	58.2	86.9	120.2	8
8050VE35	80	50	M14X35	38.8	58.2	79.9	10
8060VE35	80	60	M14X35	50.1	72.6	100.1	12
10030VE44	100	30	M16X44	142.8	285.9	385.7	6
10040VE44	100	40	M16X44	128.0	190.1	260.0	8
10050VE44	100	50	M16X44	108.6	161.8	223.5	10



飞博橡胶减震垫

中山市飞博橡胶制品有限公司

10055VE44	100	55	M16X44	100.1	151.3	205.6	11
10060VE44	100	60	M16X44	89.2	131.9	182.0	12
100100VE44	100	100	M16X44	50.4	74.9	103.2	20