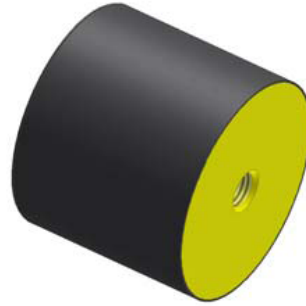
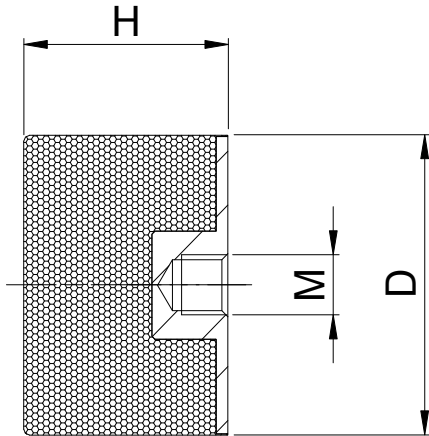


TYPE DE



Item 型号	D	H	M x l	橡胶硬度 45 IRHD (daN/mm)	橡胶硬度 60 IRHD (daN/mm)	橡胶硬度 70 IRHD (daN/mm)	Maximale statische Einfederung 适当压缩量(mm)
1620DE04	16	20	M4	3.1	3.1	3.1	4.0
1620DE05	16	20	M5	3.1	4.6	6.4	4.0
2015DE06	20	15	M6	9.2	14.0	19.3	3.0
2020DE06	20	20	M6	5.3	7.9	10.9	4.0
2030DE06	20	30	M6	2.9	4.2	5.9	6.0
2515DE06	25	15	M6	18.4	28.3	39.6	3.0
2520DE06	25	20	M6	12.9	19.0	25.7	4.0
2520DE08	25	20	M8	12.9	19.0	25.7	4.0
2525DE06	25	25	M6	7.3	10.8	15.0	5.0
2525DE08	25	25	M8	7.3	10.8	15.0	5.0
2530DE08	25	30	M8	5.3	7.9	10.5	6.0
3015DE08	30	15	M8	24.0	35.9	50.1	3.0
3017DE08	30	17	M8	19.5	30.5	41.2	3.4
3020DE08	30	20	M8	15.4	23.2	31.7	4.0
3030DE08	30	30	M8	7.1	10.5	14.5	6.0
3040DE08	30	40	M8	5.5	8.0	11.1	8.0
4020DE08	40	20	M8	31.6	47.6	65.4	4.0
4020DE10	40	20	M10	31.6	47.6	65.4	4.0
4025DE10	40	25	M10	22.2	33.3	45.9	5.0
4027DE08	40	27	M8	18.6	27.6	37.9	5.4
4028DE10	40	28	M10	18.1	26.9	36.7	5.6
4030DE08	40	30	M8	15.9	23.7	33.1	6.0
4030DE10	40	30	M10	15.9	23.7	33.1	6.0
4040DE08	40	0	M8	89.9	14.8	20.3	8.0



4040DE10	40	40	M10	89.9	14.8	20.3	8.0
4045DE10	40	45	M10	8.4	12.8	17.6	9.0
5015DE10	50	15	M10				
5021DE10	50	21	M10	70.4	105.0	144.6	4.2
5030DE10	50	30	M10	33.6	49.5	68.7	6.0
5040DE10	50	40	M10	17.3	25.7	35.6	8.0
5045DE10	50	45	M10	13.6	20.3	28.2	9.0
5050DE10	50	50	M10	11.1	16.6	23.0	10.0
6025DE10	60	25	M10	84.0	109.3	172.6	5.0
6036DE10	60	36	M10	47.3	70.4	96.8	7.2
6036DE12	60	36	M12	47.3	70.4	96.8	7.2
6040DE10	60	40	M10	38.6	57.4	78.0	8.0
6040DE12	60	40	M12	38.6	57.4	78.0	8.0
6045DE10	60	45	M10	30.8	45.8	63.4	9.0
6045DE12	60	45	M12	30.8	45.8	63.4	9.0
7030DE10	70	30	M10	87.7	130.7	178.3	6.0
7030DE12	70	30	M12	87.7	130.7	178.3	6.0
7040DE10	70	40	M10	50.5	75.2	104.0	8.0
7040DE12	70	40	M12	50.5	75.2	104.0	8.0
7045DE10	70	45	M10	39.6	58.9	79.1	9.0
7045DE12	70	45	M12	39.6	58.9	79.1	9.0
7050DE10	70	50	M10	31.7	47.5	65.8	10.0
7050DE12	70	50	M12	31.7	47.5	65.8	10.0
7070DE10	70	70	M10	21.1	31.1	43.0	14.0
7070DE12	70	70	M12	21.1	31.1	43.0	14.0
7525DE12	75	25	M12	144.0	218.4	300.8	5.0
7540DE12	75	40	M12	54.5	98.0	133.7	8.0
7550DE12	75	50	M12	40.4	60.2	83.2	10.0
8030DE14	80	30	M14	140.0	211.2	290.4	6.0
8040DE14	80	40	M14	74.3	110.9	153.5	8.0
8050DE14	80	50	M14	49.1	74.0	102.2	10.0
8060DE14	80	60	M14	33.0	49.5	68.0	12.0
10030DE16	100	30	M16	104.1	208.5	281.1	6
10040DE16	100	40	M16	93.3	138.6	189.5	8
10050DE16	100	50	M16	79.2	117.9	162.9	10
10055DE16	100	55	M16	73.0	110.3	149.9	11
100100DE16	100	100	M16	36.8	54.6	75.3	20
150100DE20	150	100	M20				